

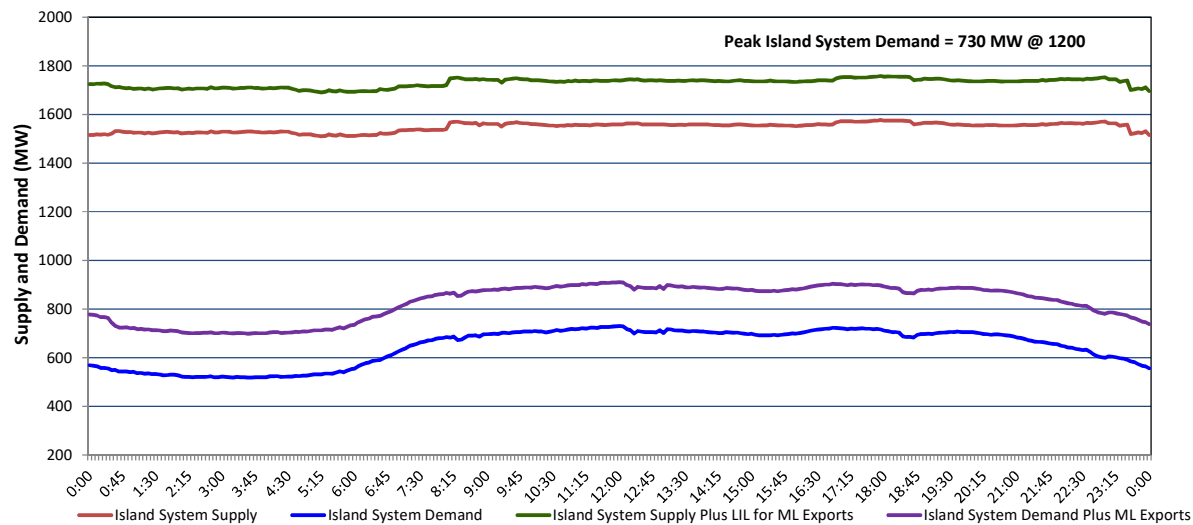
Newfoundland Labrador Hydro (NLH)

Supply and Demand Status Report Filed Monday, September 22, 2025

Section 1

Island Interconnected System - Supply, Demand & Exports

Actual 24 Hour System Performance For Friday, September 19, 2025



Island Supply Notes For September 19, 2025¹

- A As of 0800 hours, March 30, 2025, Holyrood Unit 3 unavailable due to planned outage 130 MW (150 MW).
- B As of 0823 hours, March 31, 2025, Bay d'Espoir Unit 1 unavailable due to planned outage (76.5 MW).
- C As of 0823 hours, March 31, 2025, Bay d'Espoir Unit 2 unavailable due to planned outage (76.5 MW).
- D As of 2000 hours, September 13, 2025, Holyrood Unit 2 unavailable due to forced extension to planned outage 115 MW (170 MW).
- E As of 1134 hours, September 15, 2025, Labrador Island Link available at 450MW due to planned derating (700 MW) - Monopole.
- F As of 1312 hours, September 17, 2025, St. Anthony Diesel Plant unavailable due to a planned outage (9.7 MW).
- G As of 1900 hours, September 17, 2025, Holyrood Unit 1 available at 140 MW due to a planned derating (170 MW).
- H **At 2245 hours, September 19, 2025, Granite Canal Unit unavailable due to a forced outage (40 MW).**

Section 2

Island Interconnected System - Supply, Demand & Outlook

Sat, Sep 20, 2025	Island System Outlook ²	Seven-Day Forecast	Island System Daily Peak Demand (MW)	
			Forecast ⁸	Adjusted ⁶
Island System Supply: ⁴	1,373 MW	Saturday, September 20, 2025	770	720
NLH Island Generation: ^{3,7}	1,140 MW	Sunday, September 21, 2025	830	780
NLH Island Power Purchases: ⁵	40 MW	Monday, September 22, 2025	805	755
NP and CBPP Owned Generation:	195 MW	Tuesday, September 23, 2025	795	745
LIL/ML Net Imports to Island: ⁹	(2) MW	Wednesday, September 24, 2025	815	765
		Thursday, September 25, 2025	805	755
		Friday, September 26, 2025	795	745
7-Day Island Peak Demand Forecast:	830 MW			

Island Supply Notes For September 20, 2025

- I **At 0404 hours, September 20, 2025, Labrador Island Link unavailable due to forced outage (700 MW).**

- Notes:
1. Generation outages for running and corrective maintenance are included. These are not unusual for power system operations. They generally do not impact customer supply. Hydro schedules outages to system equipment whenever possible to coincide with periods when customer demands are low and sufficient supply reserves are available. However, from time to time equipment outages are necessary and reserves may be impacted.
 2. As of 0800 Hours.
 3. Gross continuous unit output.
 4. Gross output from all Island sources (including Note 3).
 5. NLH Island Power Purchases include: ML Imports, Exploits Generation, Rattle Brook, Star Lake, Wind Generation and capacity assistance (when applicable).
 6. Adjusted for interruptible load and the impact of voltage reduction when applicable.
 7. Due to limitations inherent in the design of combustion turbines, the output of combustion turbines may be reduced in the event that ambient temperatures exceed the threshold required for full rated output. This threshold is dependent on the design of each turbine.
 8. Does not include ML Exports.
 9. LIL Import sunk in the Island System. Actual LIL flows will be restricted by various system conditions including, but not limited to, Island Load, ML Exports and Avalon Unit status.

Section 3

Island Peak Demand and Exports Information

Previous Day Actual Peak and Current Day Forecast Peak

Fri, Sep 19, 2025	Island Peak Demand ¹⁰	12:00	730 MW
	Exports at Peak		181 MW
	LIL Net Imports to Island		3,292 MWh
Sat, Sep 20, 2025	Forecast Island Peak Demand		770 MW

- Notes:
10. Island Demand is supplied by NLH generation and purchases, LIL Imports plus generation owned and operated by Newfoundland Power and Corner Brook Pulp & Paper (Deer Lake Power, DLP).